



## INCENTIVE PROGRAM SAMPLE 4 DAYS AND 3 NIGHTS IN SAARISELKÄ

---

### WINTER 2010

DAY 1. - ARRIVAL IN LAPLAND, AT IVALO (IVL) AIRPORT  
SNOWMOBILE SAFARI FROM AIRPORT TO SAARISELKÄ  
WELCOME DINNER AT RESTAURANT SIBERIA

Flight arrives in Ivalo airport

Local guide welcoming the group at the airport

Changing the warm safari equipment and delivery of the helmets at the airport dressing room (for this we need the sizes for each person; height, weight and shoe size).

Luggage will be taken into the luggage van and taken to the hotel beforehand

After your guide has given the instructions for safety and driving the group departs for a snowmobile safari

The trail goes in the middle of snowy forests and you will get the feeling of Lapland already upon your arrival



Snowmobile safari will end in Saariselkä

Short walk to the safari office to leave the helmets

Check-in at Lapland Hotel Riekonlinna ([www.laplandhotels.com](http://www.laplandhotels.com))



Time to fresh-up at the hotel for a dinner

20h00 Meet the guide at the hotel lobby

Short walk to Restaurant Siberia ([www.ravintolasiberia.fi](http://www.ravintolasiberia.fi))

Restaurant Siberia in Saariselkä is an a la carte –restaurant. On the menu you will see traditional Lappish delicacies with ingredients from the exotic surroundings of Inari all the way to the flavours of the international kitchen.



In Siberia you will find a cosy bar with fireplace and jazz music playing in the background. There is also piano music from time to time! Wine-lovers may want to try wines which come from the best European wine countries.

Dinner of 3 courses + coffee will be served for the group

Menu: to be decided later by customer

After dinner short walk back to the hotel

Accommodation in the hotel



DAY 2. - FULL DAY SNOWMOBILE SAFARI  
HUSKY RIDE, 30 MIN  
LUNCH AT THE REINDEER FARM  
REINDEER RIDE, SHORT  
DINNER AT SNOW RESTAURANT

Scandinavian breakfast buffet at the hotel restaurant

09h30 Meet the guide at the hotel

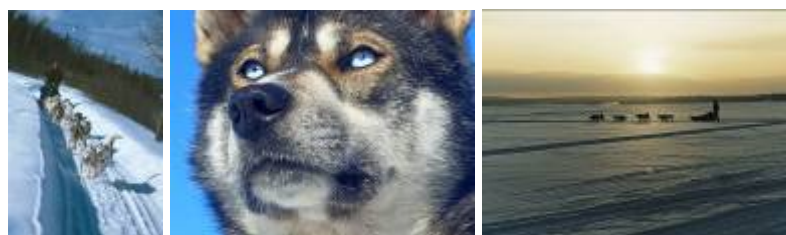
Short walk to the safari office, where the group will get the helmets

Safety and driving instructions will be given before the departure

10h00 Starting the engines again and heading to the snow-covered wilderness



The trail takes you first to the local husky camp, where friendly huskies welcome the group



Everyone can enjoy the husky ride of 30 minutes in a sledge (2/sledge) hauled by the husky team.

After ride listening stories about the huskies and enjoying the cup of hot juice or coffee

Continuing the safari towards reindeer farm

On arrival at a reindeer farm lunch will be served for the group (2 courses + coffee/tea)



It is a tradition that people from the south will take part in the mysterious Lappish Ceremony, so has the reindeer herder prepared to greet you in this way. The reindeers are ready to take you on an idyllic ride in the forest.



16h00 Safari will end back to the hotel

Non-stop saunas at disposal at hotel (not private)

19h30 Meet the guide at the hotel lobby

Departure by private coach for a dinner in the World´s Largest Snow Restaurant

The Snow Restaurant offers delicious three course dinners in a very special environment. The restaurant is inside a huge Snow Igloo, decorated with ice-sculptures. A delicious, hot three courses dinner and coffee is enjoyed on tables made of crystal clear ice.

Menu: to be decided later by customer



After dinner transfer back to the hotel

Accommodation in twin rooms (2/room)



### DAY 3. - PORSCHE DRIVING PROGRAM FAREWELL DINNER AT KAAMOSKAMMI

Scandinavian breakfast buffet at the hotel restaurant

Meet the guide in the hotel lobby

Coach transfer to the Arctic Driving Center



Driving a car in winter requires skill, and this is why everybody needs the practice. And There is nothing mystical about driving under slippery conditions. The laws of physics govern the movement of the car and you just have to learn to cope with these laws. The same holds true in summer, and things you have picked up under winter conditions may prove extremely useful at a later stage. The best way to learn all this is to do it with Porsche!

Porsche is proud of using an exclusive location close to Rovaniemi. A team of highly professional specialists are preparing the driving sections. The day consists of the following tasks in groups of 8-10 participants. Each group will be guided by 1 Porsche instructor and 1 Porsche hostess

1. Theory briefing (hot and soft drinks are available)
2. The following sections will be driven:
  - Over and under steering
  - Slalom
  - Double weight change (figure of 8)
  - Handling parcour - free driving
3. Lunch with all participants int the wooden teepee incl. hot and soft drinks
4. Continuation of the driving program
5. End of the driving training
6. Farewell and individual departure

The Porsche cars driven are:

Porsche Cayman S (PDK)

Porsche 911 Carrera 2S and 4S (2nd Generation with PDK)

Porsche 911 Turbo

Porsche Panamera (PDK)



There will be 2 active drivers in each car. On spot all participants have to sign the vehicle hire contract with a self liability of 10.000 €.

After the speedy activities transfer back to the hotel

Non-stop saunas at disposal at hotel (not private)

19h30 Meet the guide at the hotel lobby

Private transfer to Kaamoskammi for a dinner

Kaamoskammi, built from massive logs, is a safe, dim nest that's almost entirely cloaked in snow during the winter. Let time come to a standstill in windowless Kaamoskammi where you can curl up and listen to the whispering fells. Your meal is made from the pure ingredients of Lapland cooked over the blaze of an open fire.



Dinner of 3 courses + coffee will be served for the group

Menu: to be decided later by customer

After dinner transfer back to the hotel

Accommodation in twin rooms (2/room)

#### DAY 4. - BRUNCH AT RESTAURANT HUIPPU DEPARTURE

Scandinavian breakfast buffet at the hotel restaurant

Check-out from Lapland Hotel Riekonlinna

Meet the guide at the hotel lobby

Luggage will be taken to the bus by the customer



Private transfer to the Huippu restaurant, located on the top of Kaunispää fell, 437 meters above the sea level.

A magnificent scenery reaches from the top over the round shaped archipelago of Saariselkä fell area as far as the eye can see, in the East even far to the Russian side.



This restaurant serves high-quality Lappish dishes in an intimate decor. The restaurant was awarded the right to don the coat of arms of the Chaine des Rotisseurs organisation in 2000.

Brunch will be served in the panoramic environment

After brunch transfer continues to the airport

Departure from Ivalo airport

THANK YOU FOR VISITING US!

HAVE A SAFE TRIP HOME AND HOPE TO SEE YOU SOON AGAIN!



## GOOD TO NOTE!

---

All programs are with weather permittance. All the items are subject to availability at the time you request the space. We reserve the right to change the rates in the event of increase of taxes, fuel costs or similar beyond our control.

### INSURANCE

All the snowmobiles, cars and forest scooters are insured as required by the Finnish Traffic Insurance Act. This insurance covers medical care for injuries to the driver and the passenger arising from accidents. Personal injuries and damages to other parties while driving a snowmobile, car or forest scooter are fully covered according to the Finnish Traffic Insurance Act. Lapland Safaris is not liable in general for personal injuries or material damage arising from accidents during other games and activities such as husky sleigh safaris, reindeer safaris or other excursions in which snowmobiles or quad bikes are not involved. Personal travel insurance is therefore highly recommended.

### SELF LIABILITY

Safari participants are held liable for damages caused to snowmobiles, forest scooters or cars. Each vehicle driver must put down a damage deposit on the spot upon their arrival, by cash or credit card, if other arrangements have not been made in advance. The amount of the deposit is EUR 505,- for snowmobiles and forest scooters and EUR 1 830,- for cars. The customer must notify Lapland Safaris in advance about who (each participant individually or the orderer or company) is going to be held responsible for self liability. The self liability is mentioned during the driving lesson before safari / car driving activity begins.

### DRIVING TERMS

The driver of a snowmobile must be 18 years old with a valid driving licence, forest scooter driver has to be at least 18 years old with a valid driving license. Children under 2 years old are free of charge and children under 15 years old get a discount and they are then allowed to sit on a sledge pulled by a snowmobile. Children under 15 years old are seated in a sledge pulled by snowmobile and are given helmets.



Driving a snowmobile or forest scooter under the influence of alcohol or any narcotic products is prohibited by Finnish law. As the responsible safari organizers, we reserve the right to change the routing and duration of the excursions if necessary, according to the prevailing weather and snow conditions, or if deemed advisable for the sake of safety and the comfort of the participants. We also reserve the right to discontinue the safari if a participant is seen as a potential danger to him/herself or to others, or is in poor health.

### MEALS & BEVERAGES

All lunches in the program include 2 courses, bread & spread, and as beverages water, berry juice and coffee/tea. All dinners in the program include 3 courses, bread & spread, and as beverages water and coffee/tea, if not otherwise mentioned.

Beverage will be charged according to the consumption and have to be paid on the spot by client or tour leader.

### TRANSFERS

Transfers are organized by private coach. One coach has capacity for maximum of 49 persons in the group.

### EXTRA COSTS

All extra costs invoiced through Arctic Incentives will have 10 % handling fee added.

**TERMS & CONDITIONS FOR CONFIRMATION, CANCELLATION AND PAYMENT ARE ATTACHED.**