



# ICEMEN OF FINLAND

---

\* 4 NIGHTS, 5 DAYS IN YLLÄS

## DAY 1 - WELCOME TO LAPLAND!

Upon arrival at Kittilä airport, meet & greet by your local English speaking guide. No need to seek out nature, it is all around you, just step out from the plane.

A real surprise to start your Lapland adventure: A snowmobile safari straight from Kittilä airport to the Snow Village!

Change into safari thermal outfits in the airport lounge and proceed to the snowmobiles. After snowmobile driving instructions you will start the first part of your Lapland adventure. Drive through snow covered forests to a cosy spot where a traditional Lappish ceremony will be performed. During the ceremony everyone will be traditionally welcomed by a Lapp in local costume and enjoy a non-alcoholic welcoming drink. During the day 2 course lunch is served.



The safari will continue across snowy landscapes to the impressive Lainio Snow Village. Duration 6 hours.

At the Snow Village you will be met by spectacular snow and ice sculptures as you make your way through the corridors of the large snow building to your igloo. Relax your muscles in the sauna before dinner which is served in the exotic Ice Restaurant. The entire restaurant is made of snow and ice – even the tables and chairs!

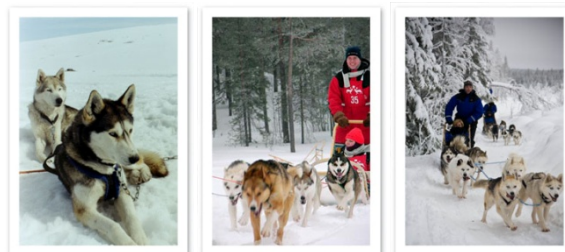


An unforgettable night in specially made sleeping bags in an igloo!

## DAY 2 - HUSKIES IN PANORAMIC SCENERY

Breakfast at Snow Village.

Dressed in thermal outfit you will be transferred to the starting point of a husky-safari. The excited husky-teams, each consisting of 5 to 7 dogs, are harnessed in front of a sledge. After short driving instructions by the guides you speed off through the silent forest and over the majestic panorama of the fells. The only sound is the soft sliding of the sledge in its snowy track. Two persons are sharing the sledge of a husky-team, one sitting the other steering. During the safari places will be swapped. Hot soup lunch and warm drink is served around open fire. Afterwards continue by snowmobiles to Äkäslompolo. Duration of husky safari is 3 hours and snowmobiling 3 hours.



Arrival to your hotel, Lapland Hotel Äkäshotelli. Pre-registered check-in and key envelopes are ready in alphabetical order. Your luggage will be taken to your room by hotel porters. You will have accommodation in The Alp2 –apartments, that were built in 2006. They are equipped like the Alp1 –apartments, but they have two separate bedrooms for two persons.

- 16 apartments for 2 – 6 persons
- 2 Separate bedrooms for 2
- Extra bed for 2 from the couch
- 56m<sup>2</sup>
- Bathroom, WC, Sauna



- Drying closet for clothes
- Fireplace
- Well equipped mini-kitchen

Dinner is served in hotel restaurant Pirtukirkko.



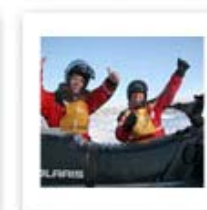
Overnight in Lapland Hotel Äkäshotelli

#### DAY 3 - OLYMPIC GAMES AT THE CIRCLE OF MAN

Shortly after breakfast meet your local guide in hotel lobby. At first you will take a coach transfer to our Safari club and the snowmobiles which are ready and waiting right outside the Safari Club. After instructions of how handle the vehicles you will start the one part your Lapland adventure. Drive through snow covered forests to the huge snowy Ylläs fell. You can enjoy the beautiful view on top of Ylläs fell! (Weather permitting). A pause and hot beverages keep your motor running.



Upon arrival at the Circle of Man the first ceremony is to light the Olympic fire and take the Olympic oath. The group is divided into smaller teams which rotate from station to station during the snow whirling fun of the winter games. The teams compete against each other by collecting points in various events like reindeer lassoing, snowshoe relay, smartness test, tandem-skiing relay and kick sleigh relay.





There are rinks and stations for each event, and possibilities for enjoying a refreshing juice or a hot coffee. You can also enjoy a tasty Lappish lunch after the games.

During the victory ceremony the best team but will be awarded a prize according to Lappish customs. After the games you will continue by snowmobiles back to the Safari Club and by coach back to your hotel. Duration app. 5 hours.

Dinner is served in hotel restaurant Pirtukirkko.

#### DAY 4 - FAREWELLS TO LAPLAND!

Breakfast buffet and morning at leisure.

Check-out followed by a private coach transfer to Kittilä airport for departure.

THANK YOU FOR VISITING US!

HAVE A SAFE TRIP HOME AND HOPE TO SEE YOU SOON AGAIN!



## GOOD TO NOTE!

---

All programs are with weather permittance. All the items are subject to availability at the time you request the space. We reserve the right to change the rates in the event of increase of taxes, fuel costs or similar beyond our control.

### INSURANCE

All the snowmobiles, cars and forest scooters are insured as required by the Finnish Traffic Insurance Act. This insurance covers medical care for injuries to the driver and the passenger arising from accidents. Personal injuries and damages to other parties while driving a snowmobile, car or forest scooter are fully covered according to the Finnish Traffic Insurance Act. Lapland Safaris is not liable in general for personal injuries or material damage arising from accidents during other games and activities such as husky sleigh safaris, reindeer safaris or other excursions in which snowmobiles or quad bikes are not involved. Personal travel insurance is therefore highly recommended.

### SELF LIABILITY

Safari participants are held liable for damages caused to snowmobiles, forest scooters or cars. Each vehicle driver must put down a damage deposit on the spot upon their arrival, by cash or credit card, if other arrangements have not been made in advance. The amount of the deposit is EUR 505,- for snowmobiles and forest scooters and EUR 1 830,- for cars. The customer must notify Lapland Safaris in advance about who (each participant individually or the orderer or company) is going to be held responsible for self liability. The self liability is mentioned during the driving lesson before safari / car driving activity begins.

### DRIVING TERMS

The driver of a snowmobile must be 18 years old with a valid driving licence, forest scooter driver has to be at least 18 years old with a valid driving license. Children under 2 years old are free of charge and children under 15 years old get a discount and they are then allowed to sit on a sledge pulled by a snowmobile. Children under 15 years old are seated in a sledge pulled by snowmobile and are given helmets.



Driving a snowmobile or forest scooter under the influence of alcohol or any narcotic products is prohibited by Finnish law. As the responsible safari organizers, we reserve the right to change the routing and duration of the excursions if necessary, according to the prevailing weather and snow conditions, or if deemed advisable for the sake of safety and the comfort of the participants. We also reserve the right to discontinue the safari if a participant is seen as a potential danger to him/herself or to others, or is in poor health.

### MEALS & BEVERAGES

All lunches in the program include 2 courses, bread & spread, and as beverages water, berry juice and coffee/tea. All dinners in the program include 3 courses, bread & spread, and as beverages water and coffee/tea, if not otherwise mentioned.

Beverage will be charged according to the consumption and have to be paid on the spot by client or tour leader.

### TRANSFERS

Transfers are organized by private coach. One coach has capacity for maximum of 49 persons in the group.

### EXTRA COSTS

All extra costs invoiced through Lapland Hotels and Safaris will have 10 % handling fee added.

**TERMS & CONDITIONS FOR CONFIRMATION, CANCELLATION AND PAYMENT ARE ATTACHED.**